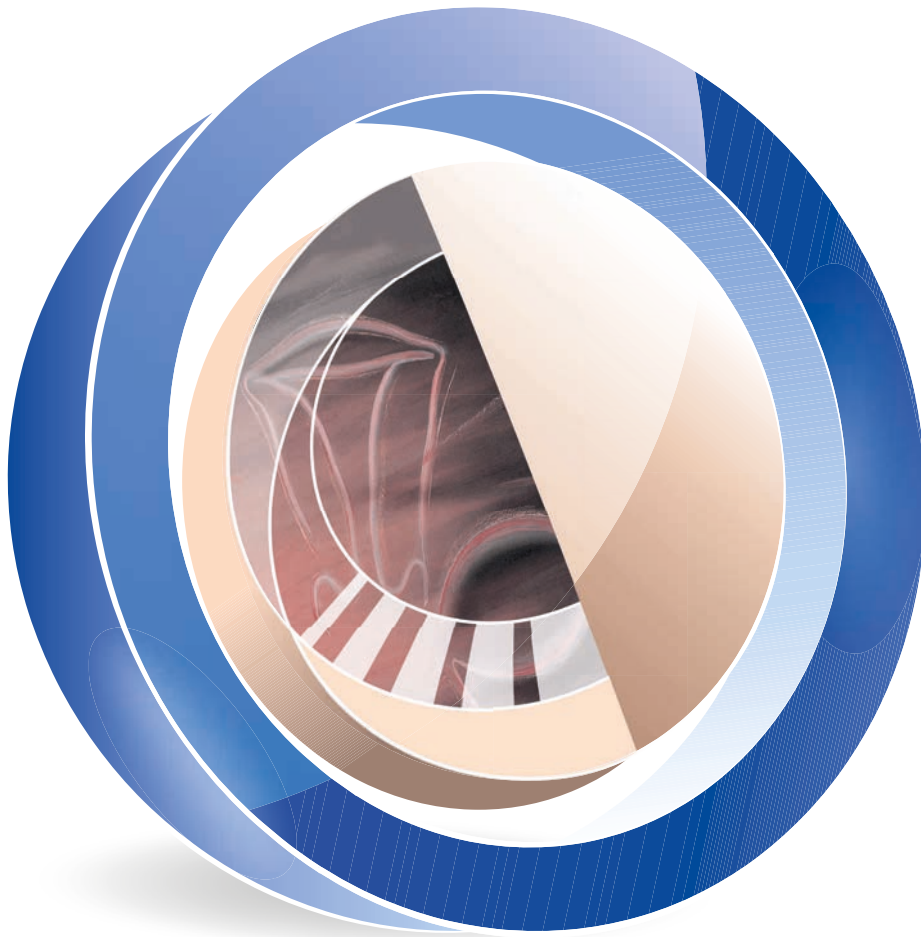


Highlights

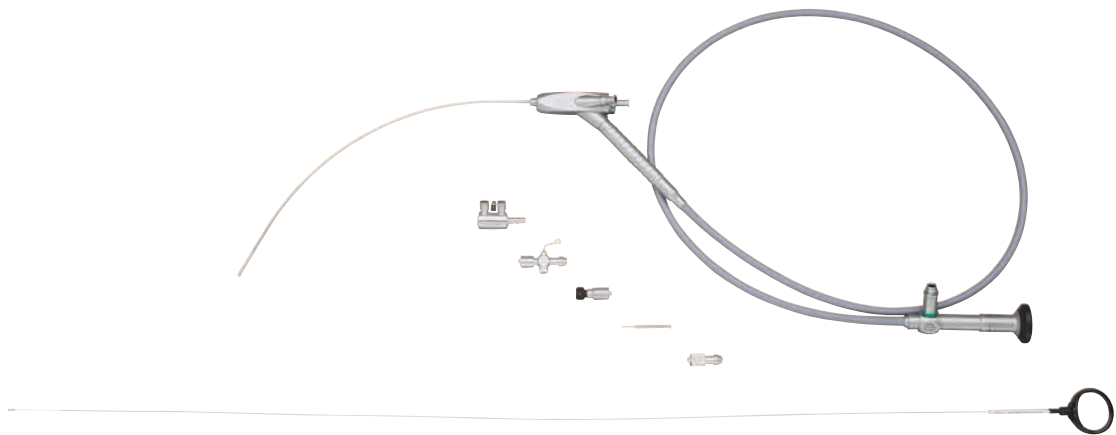
GYN 10 2.0 10/2019/-E



ENDOSCOPY IN
FETAL MEDICINE
Recommended Sets

STORZ
KARL STORZ – ENDOSKOPE





Sets for the Treatment of Twin-to-Twin Transfusion Syndrome

Second trimester – anterior placenta → deflecting mechanism

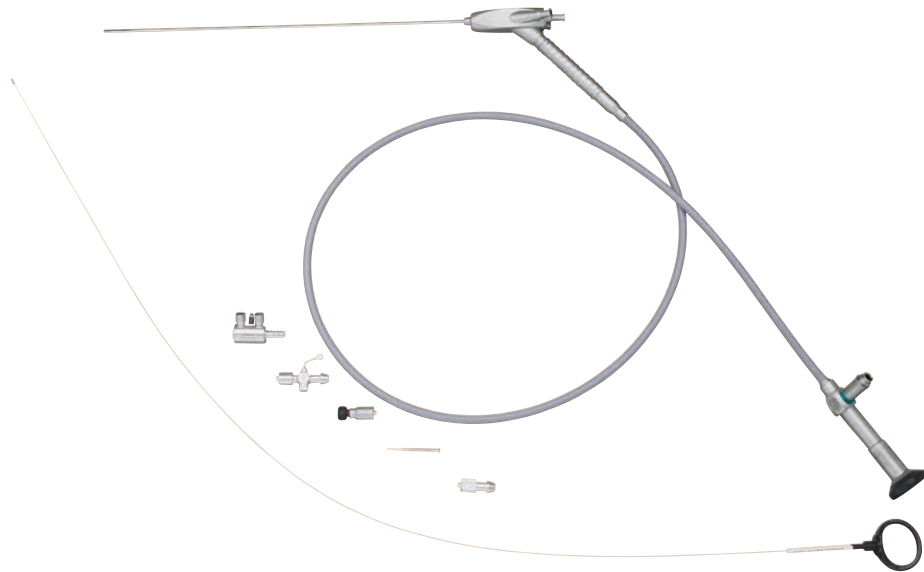
26008 BUA **HOPKINS® Forward-Oblique Telescope 30°**, diameter 2 mm, length 26 cm

26161 UFK **Operating Sheath**, straight, with pyramidal obturator, size 11.5 Fr.

26161 UH **Working Insert**, with steering lever

Second trimester – anterior placenta → curved scope

11508 AAK **Miniature Straight Forward Telescope 0° Set**, curved, diameter 3.3 mm, length 30 cm, with 30,000 pixels, central working channel 4 Fr., lateral working channel 3 Fr.



Second trimester – posterior placenta → straight sheaths

11506 AAK **Miniature Straight Forward Telescope 0° Set**, straight, diameter 3.3 mm, length 30 cm, with 30,000 pixels, central working channel 4 Fr., lateral working channel 3 Fr.

or

11630 AA **Miniature Straight Forward Telescope 0°**, semirigid, outer diameter 2 mm, length 30 cm

11630 KH **Operating Sheath**, straight, with blunt tip, size 9 Fr., with 2 obturators, with working channel size 1

11630 KF **Operating Sheath**, straight, with pointed tip, size 9 Fr., with 2 obturators, with working channel size 1



Embryoscopy

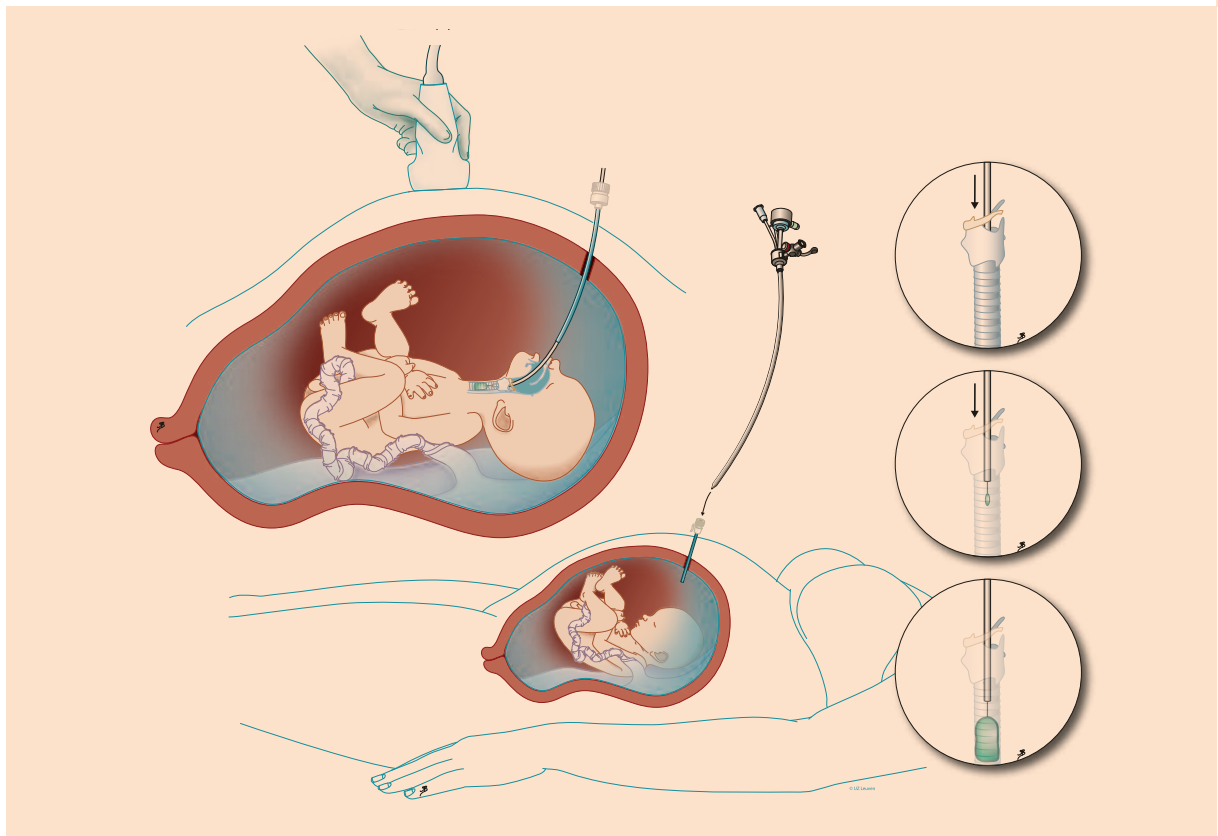
- 11510 A **Miniature Straight Forward Telescope 0°**, semirigid, outer diameter 1 mm
- 11510 KA **Examination Sheath**, straight, diameter 1.3 mm, with pyramidal obturator
- 11510 KI **Operating Sheath**, curved, size 5.6 Fr., with 0.8 mm working channel
- 11510 KE **Operating Sheath**, straight, size 5.6 Fr., with 0.8 mm working channel
- 11510 KC **Puncture Needle**, diameter 0.6 mm, for single use
- 11510 L **Biopsy Forceps**, semirigid, single action jaws, 3 Fr.

TTTS – 15 to 18 weeks

- 11510 A **Miniature Straight Forward Telescope 0°**, semirigid, outer diameter 1 mm
- 11510 KD **Operating Sheath**, straight, size 6.5 Fr. with 1.1 mm working channel
- 11510 KE **Operating Sheath**, straight, size 5.6 Fr. with 0.8 mm working channel
- 11510 KI **Operating Sheath**, curved, size 5.6 Fr. with 0.8 mm working channel

TTTS – 17 to 20 weeks

- 11540 AA **Miniature Straight Forward Telescope 0°**, semirigid, outer diameter 1.3 mm
- 11540 KA **Operating Sheath**, straight, size 8 Fr., with 1 mm working channel
- 11540 KB **Operating Sheath**, curved, size 8 Fr., with 1 mm working channel



Congenital Diaphragmatic Hernia [CDH]

11508 AAK **Miniature Straight Forward Telescope 0° Set**, curved, diameter 3.3 mm, length 30 cm, with 30,000 pixels, central working channel 4 Fr., lateral working channel 3 Fr.

or

11540 AA **Miniature Straight Forward Telescope 0°**, semirigid, outer diameter 1.3 mm, length 30.6 cm

11540 KEK **Operating Sheath**, curved, with obturator with conical tip, size 3.3 mm

For use with Miniature Straight Forward Telescope 0° 11508 AAK and 11540 AA:

11510 C **Grasping Forceps**, semirigid, double action jaws, 3 Fr., length 35 cm

11506 P **Puncture Needle**, length 50 cm, sterile, for single use, package of 10



Set for Balloon Retrieval in Emergency Cases at Birth

Neonatal Bronchoscopy Set

- 10040 AA **Miniature Straight Forward Telescope 0°**, semirigid, outer diameter 1.3 mm, length 18.8 cm
- 10338 H **Foreign Body Forceps**, flexible, diameter 1 mm, working length 19 cm
- 10338 LCI **Telescope Bridge**
- 10315 RV **Blanking Plug**
- 10339 F DOESEL-HUZLY **Bronchoscope**, size 2.5, outer diameter 4.2 mm, inner diameter 3.5 mm, length 18.5 cm
- 10338 S **Guiding Piece**, for suction catheters, short
- 10924 SP **Suction Plug**

C-MAC® MILLER #0 for Neonatal Bronchoscopy Set

- 8403 ZXK **C-MAC® Monitor for CMOS Endoscopes, Set**, screen size 7" with 1280 x 800 pixel resolution, two camera inputs, video and image documentation in real time on SD card
- 8401 DXC **MILLER C-MAC® Video Laryngoscope #0**, CMOS technology, size 0
- 8402 X **Electronic Module**, for C-MAC® Monitor 8402 ZX/8403 ZX

Cord Occlusion from 20 weeks onwards

- 26184 HC **TAKE-APART® Bipolar Coagulation Forceps**, with connector pin for bipolar coagulation, width of jaws 1 mm, size 3 mm, length 30 cm
- 30114 GKL **Trocar**, with pyramidal tip, with LUER-Lock connector for insufflation, size 3.5 mm, working length 10 cm

and/or

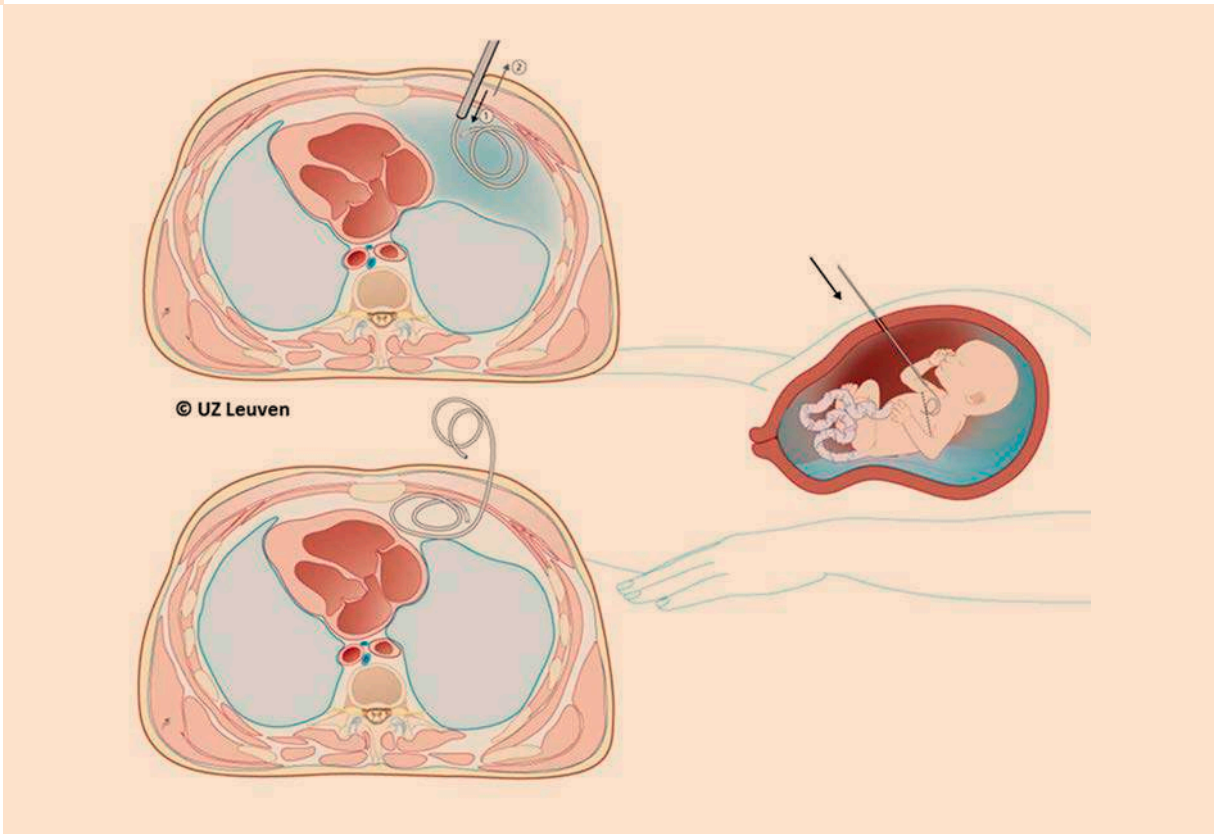
- 11540 HLS **Bipolar Optical Grasping Forceps**, flat jaws, serrated, size 3 mm, length 24.5 cm
- 11519 AS **Trocar**, with pyramidal tip, drop-shaped profile, with LUER-Lock connector, size 3.6 x 5.4 mm, working length 10 cm

Use of new silicone seals are recommended

- 11603-X2 **Sealing Cap**, for use with trocars size 2.5 mm in conjunction with instruments size 2 mm, package of 10, color code: blue
- 30114-X3 **Sealing Cap**, for use with trocars size 3.5 mm and extractors/reduction sleeves in conjunction with instruments sizes 3 and 3.5 mm, package of 10, color code: green

Amniotic Band Syndrome

- 11540 AA **Miniature Straight Forward Telescope 0°**, semirigid, outer diameter 1.3 mm, length 30.6 cm
- 11540 OS **Optical Scissor**, single action jaws, size 3.3 mm
- 30114 GKL **Trocar**, with pyramidal tip, with LUER-Lock connector for insufflation, size 3.5 mm, working length 10 cm



Shunts

11660

Shunting Set

including:

Outer Sheath, diameter 3 mm, length 19.5 mm

Obturator, with pyramidal tip

Pusher

For use only with "KCH Fetal Bladder Drainage Catheter" (R57405; Rocket Medical PLC, United Kingdom)

More information on
Endoscopy in Fetal Medicine available here:
<http://go.karlstorz.com/96121034-en-1>



Fetal Cystoscopy

11510 A **Miniature Straight Forward Telescope 0°**, semirigid, outer diameter 1 mm, length 20 cm

11510 KI **Operating Sheath**, curved, size 5.6 Fr., with 0.8 mm working channel

11510 V **Tuohy-Borst Y-Connector**, package of 5

or

11540 AA **Miniature Straight Forward Telescope 0°**, semirigid, outer diameter 1.3 mm, length 30.6 cm

11540 KB **Operating Sheath**, curved, size 8 Fr., with working channel size 1 mm

11510 V **Tuohy-Borst Y-Connector**, package of 5

Chorionic Villus Sampling

11650 FC **CVS Biopsy Forceps**, curved, size 2.2 mm, length 22 cm

11650 FS **CVS Biopsy Forceps**, straight, size 2.2 mm, length 22 cm

11650 L **CVS Biopsy Cannula**, with opening to the left, size 2.2 mm, length 22 cm

11650 R **CVS Biopsy Cannula**, with opening to the right, size 2.2 mm, length 22 cm

Recommended Fiber Optic Light Cables

495 NTA **Fiber Optic Light Cable**, diameter 2.5 mm, length 230 cm

495 NA **Fiber Optic Light Cable**, diameter 3.5 mm, length 230 cm

Further Instruments and Scopes

11540 KD **Puncture Needle**, diameter 0.9 mm, length 35 cm, for single use, package of 6, for use with Operating Sheath 11540 KEK

Scopes for Mapping

26120 AA **HOPKINS® Straight Forward Telescope 0°**, diameter 2.9 mm, length 30 cm

26120 BA **HOPKINS® Forward-Oblique Telescope 30°**, diameter 2.9 mm, length 30 cm

+ 495 EW **Light Adaptor**, angled 90°, diameter 4.8 mm, free rotatable

For use with Sheaths 26161 UK, 26161 UFK and 26161 UH

26008 AA **HOPKINS® Straight Forward Telescope 0°**, diameter 2 mm, length 26 cm

26008 FUA **HOPKINS® Telescope 12°**, diameter 2 mm, length 26 cm

For use with Miniature Straight Forward Telescope 11630 AA

11630 KF **Operating Sheath**, straight, with Obturator 11605 FO, 9 Fr., with working channel size 1 mm

11605 KC **Examination Sheath**, straight, diameter 2.7 mm, with 1 stopcock

TAKE-APART® Bipolar Grasping Forceps

26167 FG **TAKE-APART® Bipolar Grasping Forceps**, size 2.4 mm, flat jaws, serrated, length 26 cm including:

TAKE-APART® Bipolar Handle

TAKE-APART® Outer Sheath

TAKE-APART® Working Insert, package of 5, for single use

11516 CS **Trocar**, size 2.6 mm, working length 10 cm

or

30114 FG **Fetoscopy Trocar**, size 3.2 mm, length 10 cm

Bipolar Optical Forceps for use with Miniature Straight Forward Telescope 11540 AA



11540 FG **Bipolar Optical Grasping Forceps**, flat jaws, serrated, size 2.4 mm, length 24.5 cm

11520 AS **Trocar**, with pyramidal tip, drop-shaped profile, with LUER-Lock connector, size 3.2 x 4.95 mm, working length 10 cm

or

11540 HLS **Bipolar Optical Grasping Forceps**, flat jaws, serrated, size 3 mm, length 24.5 cm including:

Handle, with outer sheath

Working Insert, serrated

11519 AS **Trocar**, with pyramidal tip, drop-shaped profile, with LUER-Lock connector size 3.6 x 5.4 mm, working length 10 cm

Recommended Accessories

26022 MA **Alken Motion Control Device**, for attachment to the working channel, for instruments up to 5 Fr., enables precision introduction and fixation of laser fibers or instruments

27550 A **Sealing Cap**, diameter 0.8 mm, package of 10

39502 Z **Wire Tray for Cleaning, Sterilization and Storage of Instruments**, stackable, including hole plate walls and foldaway handles, external dimensions (w x d x h): 480 x 250 x 66 mm, accessories required: 39502 L, 39100 S, 39100 PS, 39360 AS for 11510 A, 11540 AA, 11630 AA

39502 ZL **Same**, external dimensions (w x d x h): 535 x 250 x 66 mm, accessories required: 39502 LX and 39100 S, 39100 PS, 39360 AS for 11506 AA and 11508 AA

11510 V **Tuohy-Borst Y-Connector**, package of 5

8285490 **Silicone Cap**, diameter 0.6 mm

27014 Y **LUER-Adaptor**, with seal

It is recommended to check the suitability of the product for the intended procedure prior to use.



THE DIAMOND STANDARD

KARL STORZ SE & Co. KG
Dr.-Karl-Storz-Straße 34, 78532 Tuttlingen/Germany
Postbox 230, 78503 Tuttlingen/Germany
Phone: +49 (0)7461 708-0
Fax: +49 (0)7461 708-105
E-Mail: info@karlstorz.com
www.karlstorz.com