

# Bendos™ FELC

## Endoscopic Linear Cutter and Single Use Loading Unit

Loading Unit Code	Staple Line Length	Staple Height	Closed Staple Height	Color Code	Trocar size
FMG-30AR	30	2.0, 2.5, 3.0 mm	0.8 - 1.6 mm	Tan	12 mm
FMG-45AR	45	2.0, 2.5, 3.0 mm	0.8 - 1.6 mm	Tan	12 mm
FMG-60AR	60	2.0, 2.5, 3.0 mm	0.8 - 1.6 mm	Tan	12 mm
FMG-30PR	30	3.0, 3.5, 4.0 mm	1.4 - 2.3 mm	Purple	12 mm
FMG-45PR	45	3.0, 3.5, 4.0 mm	1.4 - 2.3 mm	Purple	12 mm
FMG-60PR	60	3.0, 3.5, 4.0 mm	1.4 - 2.3 mm	Purple	12 mm
FMG-45TR	45	4.0, 4.5, 5.0 mm	2.25 - 3.0 mm	Black	15 mm
FMG-60TR	60	4.0, 4.5, 5.0 mm	2.25 - 3.0 mm	Black	15 mm
MG-45MR	45	2.0 mm	0.75 mm	Grey	12 mm
MG-60MR	60	2.0 mm	0.75 mm	Grey	12 mm
MG-30WR	30	2.5 mm	1.0 mm	White	12 mm
MG-45WR	45	2.5 mm	1.0 mm	White	12 mm
MG-60WR	60	2.5 mm	1.0 mm	White	12 mm
MG-30BR	30	3.5 mm	1.5 mm	Blue	12 mm
MG-45BR	45	3.5 mm	1.5 mm	Blue	12 mm
MG-60BR	60	3.5 mm	1.5 mm	Blue	12 mm
MG-45DR	45	3.9 mm	1.8 mm	Gold	12 mm
MG-60DR	60	3.9 mm	1.8 mm	Gold	12 mm
MG-45GR	45	4.8 mm	2.0 mm	Green	15 mm
MG-60GR	60	4.8 mm	2.0 mm	Green	15 mm
MT-45TR	45	5.0 mm	2.3 mm	Black	15 mm
MT-60TR	60	5.0 mm	2.3 mm	Black	15 mm

Handle Code	Shaft Length	Shaft Diameter
FELC-GS	85 mm	12 mm
FELC-GM	160 mm	12 mm
FELC-GL	260 mm	12 mm

### TOUCHSTONE

Touchstone International Medical Science Co., Ltd.  
278 Dongping Street, Suzhou Industrial Park, 215123,  
Suzhou, PEOPLE'S REPUBLIC OF CHINA  
Tel: +86 512 6299 1933  
Email: info@touchstone.hk

Manufacturing Licence: SSYJXSCX 20070043

Certificate of Registration No.: SXZZ 20142080404

Product Technical Requirement No.: SXZZ 20142080404

Designed by TOUCHSTONE with Trust Hope & Love



TOUCHSTONE

FELC  
Bendos™

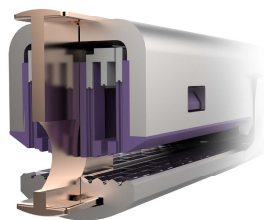
Endoscopic Linear Cutter  
and Single Use Loading Unit

Freedom of Choice



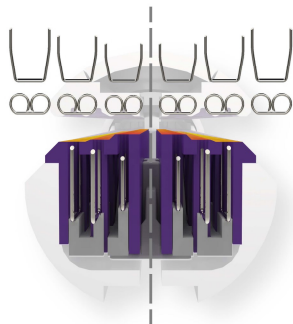
# Bendos™ FELC

Endoscopic Linear Cutter and Single Use Loading Unit



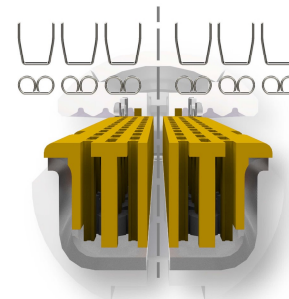
## TGC - Tissue Gap Control

Controlled staple closing height ensures consistent staple formation



## Different Height Staples

The three different staple heights optimizes hemostasis and fluid perfusion



## Multiple Reloads

A complete range for all tissue thickness



**ONE** Platform  
**TWO** Options of Reloads



## Freedom of Choice

Two options of reloads with different staple heights