

Patient Care Kits

Surgical patient positioning and support





Comprehensive Solutions For Pressure Management and Optimal Patient Care

Only Mizuho OSI® can deliver a comprehensive system of care to simplify your pressure management initiatives. From the surgical table to pressure redistributing surfaces and soft patient care kits, we deliver seamless solutions for optimal surgical positioning and patient support.

Mizuho OSI **Patient Care Kits** provide support, positioning and isolation during a surgical procedure. They provide an unsurpassed system of care and design for practical application. We understand that quality materials, superior design and intimate knowledge of the surgical table translate into better patient outcomes.



Surgical Table
Manufacturer



Patient
Care Kits



Tempur-Pedic®
Medical Pads



Real-time
Monitoring

Trios® and STS

- Available with ProneView® Cushions or GentleTouch® to provide superior support and positioning
- ShearGuard® Chest Pillow minimizes shear forces while providing isolation from the device
- Pad Covers are designed to allow the pressure management attributes of the pads to perform while adding a layer of isolation from the device
- Arm Cradles support entire length of the arm



Case Number	Description	Bulk	5802	5808	5808DCP	5808DCPPV	5808PV	5834	5834PV	5844-6	5914
5823-10	Foam Arm Cradle (pair)	6/cs	•	•	•	•	•				•
5844-13	ShearGuard Chest Pad Cover	6/pk	•	•	x2	x2	•	•	•	•	
5844-17	Hip and Thigh Pad Cover	24/pk	x4	x4	x4	x4	x4	x4	x4	x4	x4
ProneView Inserts											
D28503CE	ProneView Cushion Insert, Large	10/cs				•	•		•		
GentleTouch Pillows											
1937DZ	7" GentleTouch Headrest Pillow, Right Intubation	12/cs		•	•			•			•



Levó Sterile Drape

- Considerable time savings in draping and interoperative adjustments
- Quick and precise articulation without going under the drape
- No need for the surgeon to hold the skull clamp while waiting for critical adjustments
- Surgeon controls all adjustments without breaking the sterile field
- Full visualization of Levó with clear window

Levó Protective Arm Sleeve

- Protects the Levó Arm from fluids during surgical procedures
- Allows full range of motion of Levó
- Contoured design allows full access to component connection points
- Quick and simple application to Levó



Case Number	Description	Bulk	Protective Arm Sleeve	ShearGuard Chest Pad Cover	Hip/Thigh Pad Cover	Foam Arm Cradles	ProneView Cushion	GentleTouch Cushion	Sterile Drape
7893	Cervical Sterile Drape with Clear Window	6/cs							•
7892	Protective Arm Sleeve	12/cs	•						
7890	Non-sterile Cervical, SG	6/cs	•	•	•				
ProneView Inserts									
7887PV	Prone Platform Pkit with ProneView	6/cs	•	•	•	•	•		
GentleTouch Pillows									
7887GT	Prone Platform Pkit with GentleTouch	6/cs	•	•	•	•		•	

- Available with ProneView® Cushions or GentleTouch® to provide superior support and positioning
- Hip/Thigh/Hinge Covers are designed to allow the pressure management attributes of the pads to perform while adding a layer of patient isolation from the device and protection from fluids
- Arm Cradles support entire length of the arm



Case Number	Description	Bulk	6988A-GT	6988A-GT-ACP	6988A-PCS	6988A-PV	6988A-PV-ACP
5823-10	Foam Arm Cradle (pair)	6/cs	•	•	•	•	•
5844-13	ShearGuard Chest Pad Cover	6/pk	•	•	•	•	•
6977-7512	Hose Assembly ACP, 6977 (sets)	12/cs		•			•
6988HHC-12	Hip Hinge Cover	12/cs	•	•	•	•	•
6988STP-12	90" Positioning Strap	12/cs					
ProneView Inserts							
D28503CE	ProneView Cushion Insert, Large	10/cs				•	•
GentleTouch Pillows							
1937DZ	7" GentleTouch Headrest Pillow, Right Intubation	12/cs	•	•			

- Available with ProneView® Cushions or GentleTouch® to provide superior support and positioning
- ShearGuard® Chest Pillow minimize shear forces while providing isolation from the device
- Hip/Thigh Covers are designed to allow the pressure management attributes of the pads to perform while adding a layer of isolation from the device
- Arm Cradles support entire length of the arm



Case Number	Description	Bulk	6747	6747PV
5823-10	Foam Arm Cradle (pair)	6/cs	•	•
5844-17	Hip and Thigh Pad Cover	24/cs	•	•
6988SG-6	ShearGuard Chest Pad Cover	6/cs	•	•
6988STP-12	90" Positioning Strap	12/cs	•	•
ProneView Inserts				
D28503CE	ProneView Cushion Insert, Large	10/cs		•
GentleTouch Pillows				
1937DZ	7" GentleTouch Headrest Pillow, Right Intubation	12/cs	•	

Hana® / Hana SSXT® / ProFx®

- Ball Joint Covers protect device from fluids to prolong the life of the capital investment
- Adjustable Arm Pads facilitate a natural hand rest position and provide padding
- Perineal Post Cover provides padding and a barrier between the patient and the device



Case Number	Description	Bulk	6855	6851
6855-12	Adjustable Arm Board Pad (pair)	6/pk	•	•
6855-13	3" Diameter Perineal Post Cover, Blue Foam	12/pk	•	•
6856-22	Leg Spar Joint Protectors (pair)	12/pk	•	•
5917DZ	27" Soft Strap, Arm Boards Strap	12/cs	•	•
1902-20	Supine/Lateral Head Rest	20/cs	•	•
1921	9" Foam Head Rest, Blue Donut	24/cs		
1922	7" Foam Head Rest, Blue Donut	24/cs		
5937DZ	Universal Disposable Boot Liner for use with 6850-485, 486, 487 (pair)	12/cs		•
5929DZ	6" Diameter Perineal Post Cover, Blue Foam	12/pk		
5932	NervPro™ System Ulnar Protective Pads	12/cs		
5858	Patient Isolation Drape	12/cs		
5855-17	Large Liners, 5855 Soft Traction Boot for use with 5855-440	24/cs		
5855-18	Small Liners, 5855 Soft Traction Boot for use with 5855-440	24/cs		
5052-3	Alp Strap & Foam Boots (pair)	ea		
1901-12	Convolutd Foam Pads (pair)	12/cs		

Accessories & Components



Wilson Plus™

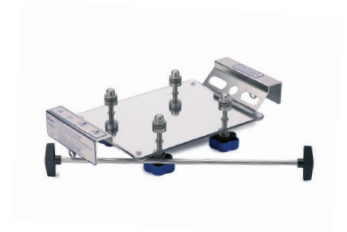
Case Number	Description	Bulk	5322	5322PV	5326	5326PV	5352	5328	5331
5823-10	Foam Arm Cradle (pair)	6/bag	•	•	•	•	•	•	•
5324-21	Pad Sleeve	12/bag	•	•	•	•	•	•	•
5324-22	Transverse Bar Cover	12/ bag	•	•	•	•	•	•	•
5324-23	Base Cover	12/bag	•	•			•		
ProneView Inserts									
D28503CE	ProneView Cushion Insert, Large	10/cs		•		•			
GentleTouch Pillows									
1937DZ	7" GentleTouch Headrest Pillow, Right Intubation	12/cs	•		•				

Axis Table System

Case Number	Description	Bulk	6980PV	6980	6984	6984PV	6985
5823-10	Foam Arm Cradle (pair)	6/cs	•	•	•	•	
6977-7512	ACP Hose Assembly, 6977 (sets)	12/cs	•	•			
6988BLW-12	Bi-Lateral Chest Pad Cover	12/cs	•	•	•	•	•
6988HHC-12	Hip Hinge Cover	12/cs	•	•	•	•	•
6988STP-12	90" Positioning Strap	12/cs			•		
ProneView Inserts							
D28503CE	ProneView Cushion Insert, Large	10/cs	•			•	
GentleTouch Pillows							
1937DZ	7" GentleTouch Headrest Pillow, Right Intubation	12/cs		•	•		

ProneView®

Case Number	Description	Bulk
D28501CE	Helmet	ea
D28520CE	ProneView Low Profile Mirror	ea
D28590CE	Mirror with Adjustable Posts	ea
D28700CE	Spine Table System (STS)/Trios Platform	ea
D28502CE	Adjustable Protective Helmet*	ea
D28580CE	ProneView Mirror with Post Holes**	ea
D28705CE	ProneView Spinal Table System (STS)/Trios Platform with Helmet	ea
D28503CE	ProneView Cushion Insert, Large	10/cs
D28505CE	ProneView Cushion Insert, Medium	10/cs
D28507CE	ProneView Cushion Insert, Small	10/cs
D28510CE	ProneView Adjustable Helmet System***	ea
M28732	Fastening Rod for STS/Trios Mirror Platform	ea



* For use with D28580CE Mirror only

** For use with D28502CE Helmet only

*** System includes an Adjustable Helmet and Mirror Platform with Post Holes

GentleTouch® Pillows

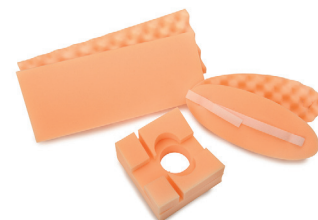
Case Number	Description	Bulk
1927SDZ	4" Adult Headrest Pillow, Right Intubation	12/cs
1948DZ	4" Pediatric GentleTouch Headrest Pillow, Right Intubation	12/cs
1937SDZ	5" GentleTouch Headrest Pillow, Right Intubation	12/cs
1941SDZ	5" GentleTouch Headrest Pillow, Left Intubation	12/cs
1937ADZ	6" GentleTouch Headrest Pillow, Right Intubation	12/cs
1927DZ	7" Headrest Pillow (No White Layer), Right Intubation	12/cs
1937DZ	7" GentleTouch Headrest Pillow, Right Intubation	12/cs
1941DZ	7" GentleTouch Headrest Pillow, Left Intubation	12/cs



Accessories & Components

ValueTouch®

Case Number	Description	Bulk
1901-12	Convuluted Foam Pads (pair)	12/cs
1902-20	Supine/Lateral Head Rest	20/cs
5359-24	Elbow Pad (pair)	24/cs



Ultra Shoulder Positioner®

Case Number	Description	Bulk
5345	Ultra Shoulder Positioner, Patient Care Kit	3/cs
5346	Ultra Shoulder Positioner, Patient Care Kit with Shoulder Immobilizer	3/cs
5348	Ultra Shoulder Positioner, Patient Care Kit with Rehab Sling	3/cs
867	Rehab Shoulder ABD/Sling Universal	ea
5351	Ultra Shoulder Positioner Strap Set	50/cs
5334	Ultra Shoulder Strap Set	3/cs
146S	Universal Shoulder Immobilizer with Strap	ea



Various Components

Case Number	Description	Bulk
5875-15	6 ft. Roll Foam Disposable Post Pad Set	3/pk
6983PV	Axis Patient Kit with ProneView, Large	6/cs
6900-44	Disposable Urology Drain Bag	10/cs
5896-8	Dual Chest Pad Covers (pair)	12/cs
5884	Endo Top Patient Kit	6/cs
6986	Spinal Surgery Top/Axis Patient Kit with Hip and Chest Pad Covers	6/cs
6947-50	Disposable Pillowcase for Tempur-Pedic® Medical Pillow (6946 and 6947)	50/cs



Foam Pads & Positioners

Photo	Case Number	Description	Bulk
A	5917DZ	27" Soft-Strap, Armboard Strap	12/pk
B	1916L	TLC Abduction Pillow, Large	ea
B	1916M	TLC Abduction Pillow, Medium	ea
B	1916S	TLC Abduction Pillow, Small	ea
C	1917	TLC Cradle Boot	ea
D	228	Ortho Boot Only	pr
E	229	Ortho Boot Liners Only	pr
F	234	Ortho Boot with Liner	pr
G	5880	Leg Wedge Foam Pads	pr
H	1912	TLC Positioner Anklets	pr
I	5065	Foam Well-Leg Positioner	ea



mizuhoosi.com/pressure



For more information or to order contact your account manager or call 1-800-777-4674.



30031 Ahern Avenue
Union City, CA 94587-1234 USA
Telephone: 510-429-1500
Toll Free: 800-777-4674
Fax: 510-429-8500
Outside USA: +1-510-429-1500
mizuhoosi.com
newhipnews.com

ProneView® is protected by US Patent Numbers 7,426,763 B2, 8,261,385 B2 and European Patent Number 1280428. The 3D configuration of the cushions is covered by US Trademark Registration No. 5,352,938.

Note: Mizuho OSI is constantly improving its products. All specifications are subject to change without notice. Mizuho OSI guarantees these products to be free of defects in material and workmanship with the exception of products which are misused, altered or damaged. • ProneView® is a registered trademark of Dupaco, Inc. • Mizuho OSI is the exclusive worldwide distributor of the ProneView® Protective Helmet System. Mizuho OSI is a Delaware Corporation.