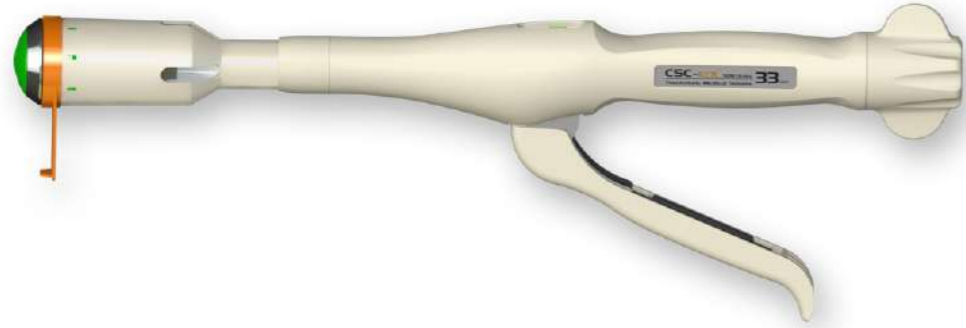


CSC-KOL



TOUCHSTONE®

Listening for the future...

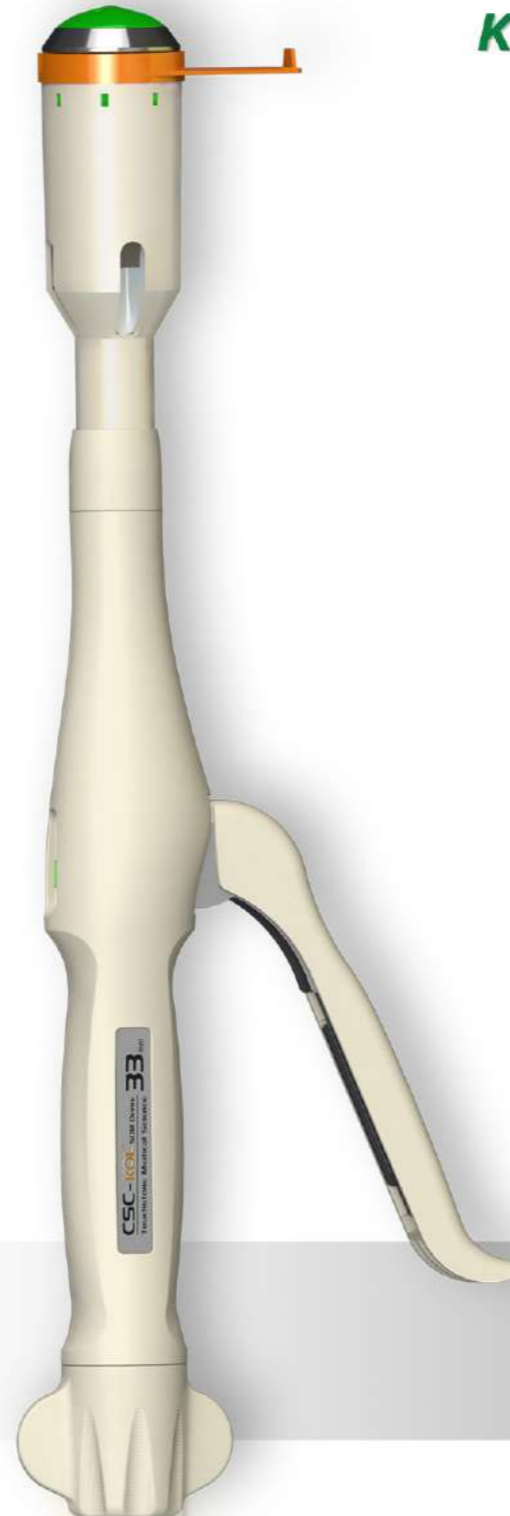
KOL™ – a TME dedicated stapler

KOL™ – a TME dedicated stapler

| Product Code | Anvil Diameter | Colour Code | Staple Quantity | Blade Diameter | Staple Height | Closed Staple Height | Housing Length / Volume |
|--------------|----------------|-------------|-----------------|----------------|---------------|----------------------|-------------------------|
| CSC29-KOL | 29mm | Blue | 24 | 20.5mm | 5.0mm | 1.0~2.5mm | 4cm/12.1cm ³ |
| CSC33-KOL | 33mm | Green | 32 | 24.8mm | 5.0mm | 1.0~2.5mm | 4cm/17.8cm ³ |

Reference:

Annals of Surgery: May 2010 - Volume 251 - Issue 5, Postoperative Complications Following Surgery for Rectal Cancer: Paun, Bogdan C. MD; Cassie, Scott MD; MacLean, Anthony R. MD; Dixon, Elijah MD; Buie, W. Donald MD. Surg 1994, Kusunoki Dig Surg 1993, Kusunoki Surgery Today 1996; Matthiessen Ann Surg 2007, Colorectal Dis 2004, Fielding Br Med J 1980, Karanjia Br J Surg 1994, Pakkastie Eur J; a MacRae DI Colon Rectum 1998, b Gervaz Surg Endosc 2001, c Fingerhut Surgery 1994, d Carbajo Rev Esp Enferm Dig 2000, e Kracht Int J Colorectal Dis 1993, f Fingerhut Surgery 1995, g Kocherling Surg Endosc 1998; Dugal Heath Bariatric Times 2009, Zilling Dis Col Rectum 1992, Kusunoki Dig Surg 1993, Kusunoki Surgery Today 1996.



Intraluminal Stapler for Single Use

Code : CSC29-KOL / CSC33-KOL

TOUCHSTONE®

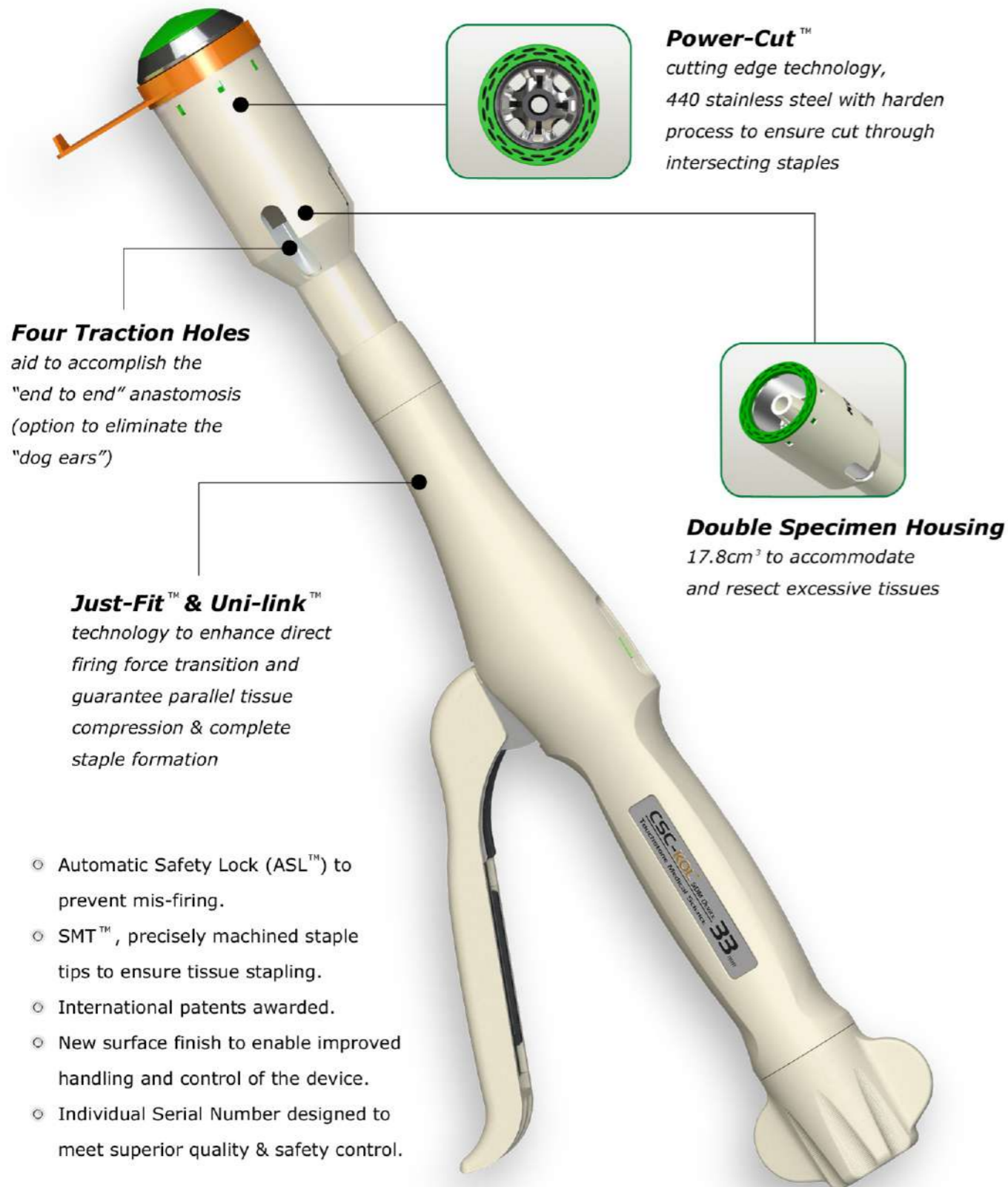
Touchstone International Medical Science Co., Ltd.
21A Science Plaza, International Science Park,
No.1355 Jinjihu Avenue, Suzhou, 215021, P.R. China
Tel: +86 512 6299 1933; 6299 1939



KOL™ – a TME dedicated stapler

CSC-KOL

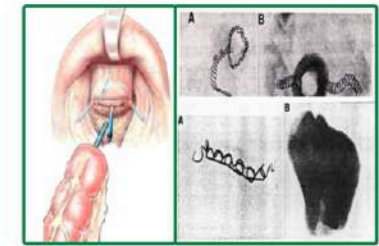
KOL™ – Features and Benefits



Existing Clinical Problems**

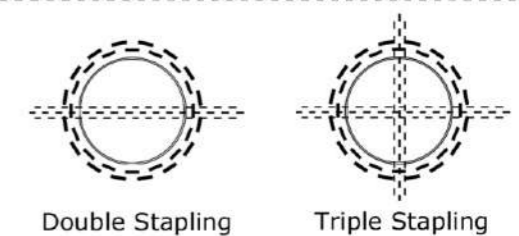
- ◆ Leakage 11%
- ◆ Bleeding 6~8%
- ◆ Stricture 5~15%
- ◆ Incomplete anastomosis
- ◆ Staple malformation

* Source: Prof. Brown JACS 2004
* "How safe is the double stapling technique in colorectal surgery?" 2012 Colorectal Conference presentation at Cleveland Clinic, Ft. Lauderdale, FL, USA, Dr. Abe Fingerhut, Poissy, France



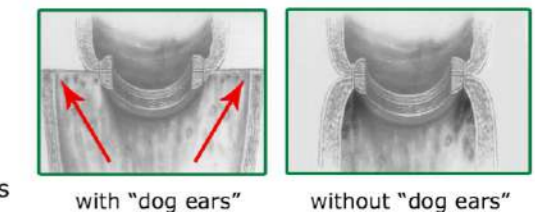
The development of stapling technique requires more staples to be cut through

- ◆ Double Stapling Technique to cut 6 staples in maximum
- ◆ Triple Stapling Technique to cut 12 staples in maximum



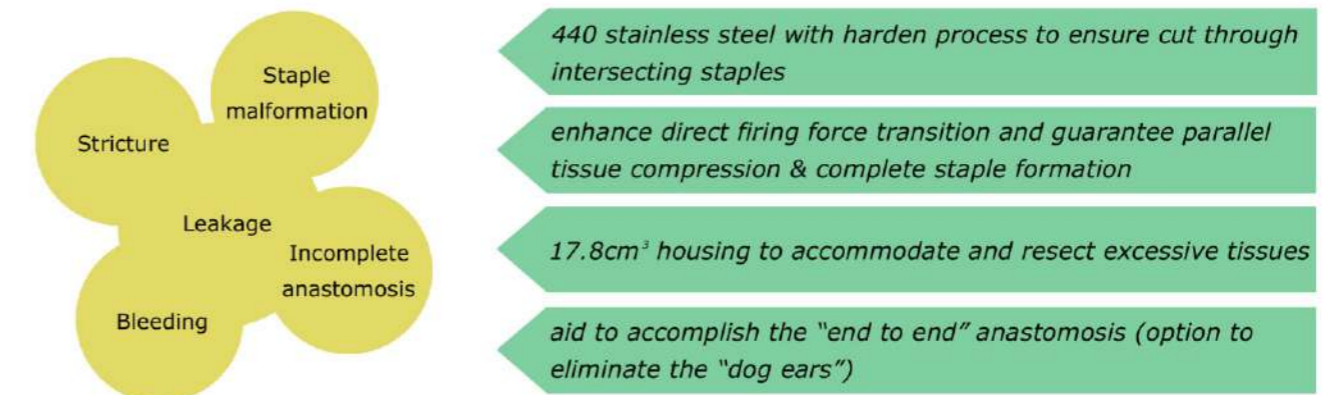
"End to Side anastomosis, mucosa of two bowel segments are not in apposition"

"DST is associated with certain drawbacks, such as at least two staple lines crossing each other, with stapled corners ("dog ear") remaining at the distal rectal stump. These parts are potentially ischemic areas"



* Postoperative Complications Following Surgery for Rectal Cancer Anal surgery doi: 10.1097/SLA.0b013e3181dae4ed
* Int J Colorectal Dis DOI 10.1007/s00384-012-1582-8 Hye Jin Kim & Gyu-Seog Choi & Jun Seok Park & Soo Yeun Park

KOL™ – a TME dedicated stapler, to overcome the existing clinical problems** in LAR



** references on rear of the brochure

TOUCHSTONE®