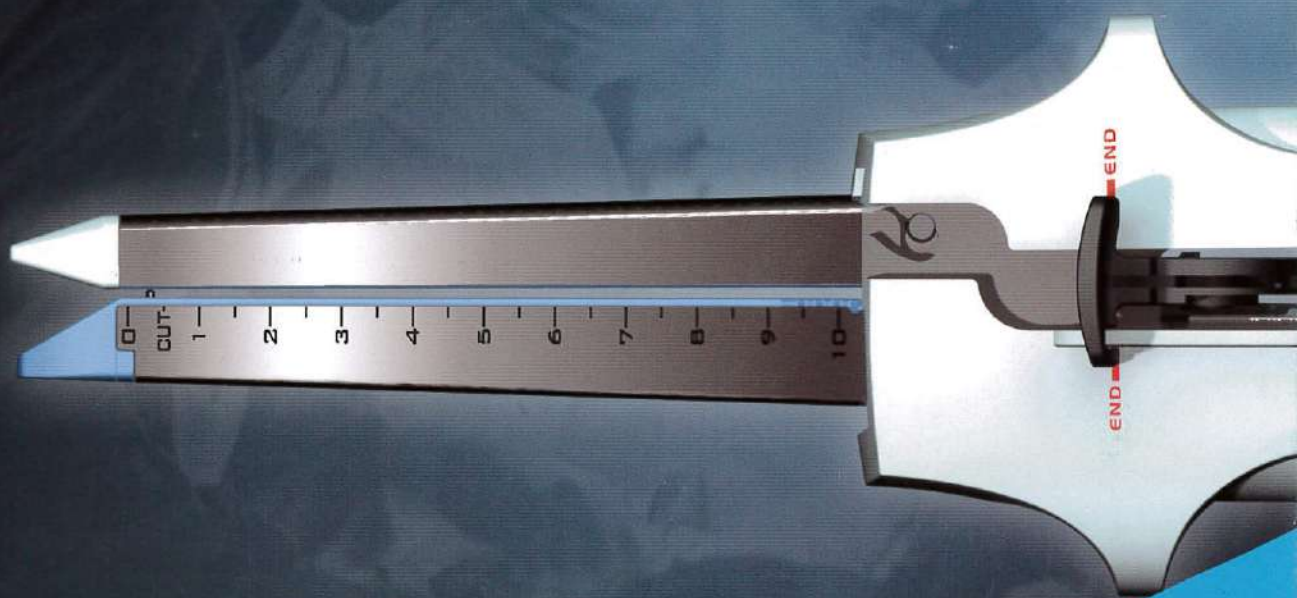


TOUCHSTONE™

LC



Linear Cutter and Reloads

Code: LC60 / LC80 / LC100

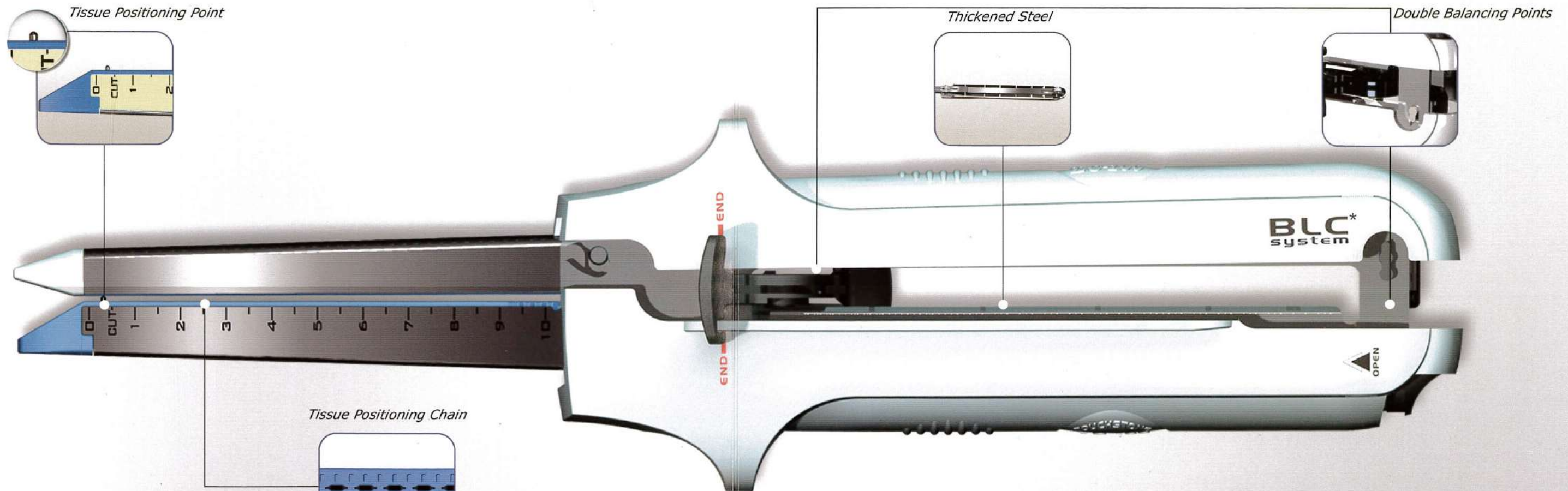
LCC60 / LCC80 / LCC100

Linear Cutter and Reloads

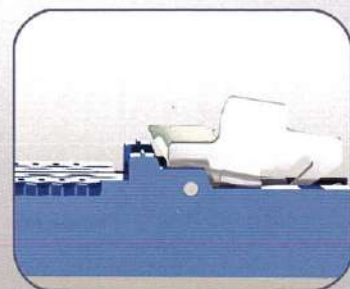
Unique Features

- BLC™ — Balanced Leverage Control System.
Ensures parallel closure of the instrument's forks.
- Tissue Positioning Point
 - Double Balancing Points
 - Thickened Steel

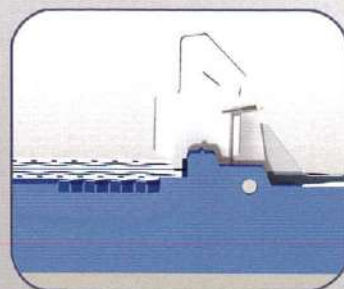
- TPC™ — Tissue Positioning Chain. Prevents tissue slippage within instrument's forks.
- SLR™ — Safety Lip Range. Enhances staple line security.



Shielding Blade

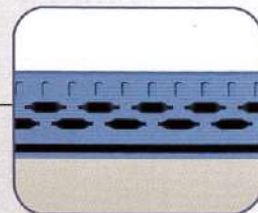


Before firing

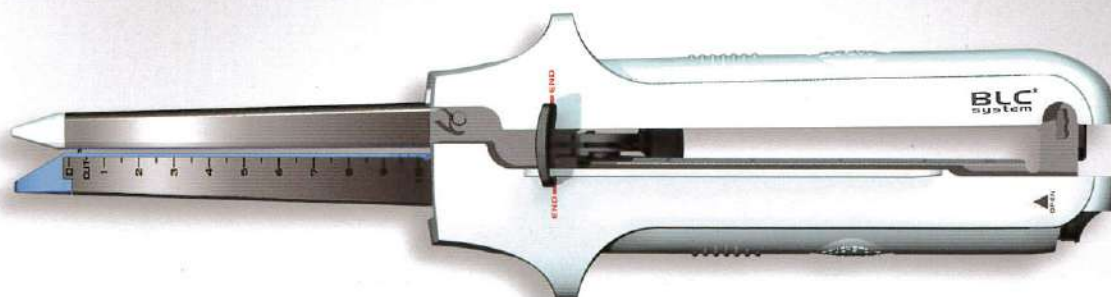


After firing

Tissue Positioning Chain



New knife with each firing.	Corrugated Anti-Slip Finger Pad.
Double-sided firing lever.	Additional Gold Cartridge Staple size.
Fast Release Button.	Length Indicator on both sides of Cartridge Fork.
End Line Indication.	Start and Stop with 1.5 more Staples beyond Cut Line.
Hinged Connection.	<i>Reloadable 11 times for a total of 12 Firings.</i>
Floating Cartridge.	



Linear Cutter and Reloads

Order Code	Staple Line Length	Cutting Length	Staple Quantity	Staple Height	Colour Code
LC6038	60	54	64	3.8	Blue
LCC6038	60	54	64	3.8	Blue
LC6045	60	54	64	4.5	Green
LCC6045	60	54	64	4.5	Green
LC8038	80	74	84	3.8	Blue
LCC8038	80	74	84	3.8	Blue
LC8042	80	74	84	4.2	Golden
LCC8042	80	74	84	4.2	Golden
LC8045	80	74	84	4.5	Green
LCC8045	80	74	84	4.5	Green
LC10038	100	94	104	3.8	Blue
LCC10038	100	94	104	3.8	Blue

TOUCHSTONE™

Touchstone International Medical Science Co., Ltd.
 21A Science Plaza, International Science Park,
 No.1355 Jinjihu Avenue, Suzhou, 215021, P. R. China
 Tel: +86 512 6299 1933



Manufacturing Licence: SSYJXSCX 2007-0043

Product Registration Certificate: SSYJX(Zhun)Zi 2009 No.2080033

Product Standard: YZB/Su 0033-2009